

TIVERTON, RHODE ISLAND



WALK  
LOOK  
EXPLORE

18 miles of **Walking Trails** through  
deep woods, pastoral meadows,  
salt marshes and river vistas



## WELCOME TO TIVERTON

We take great pride in our small town's intimate character and cherish our history, arts community, and the natural beauty of our preserved wild places. We invite you to enjoy the more than 18 miles of public trails in our woods, meadows, and coastal marshes.


For nature to thrive, your assistance in keeping these areas pristine is greatly appreciated.

Carry out what you carry in. And enjoy.

Funded by the Tiverton Land Trust, Town of Tiverton, Discover Newport and Pocassetlands Stewardship Fund.

Published by the Tiverton Open Space Commission, Town Hall, 343 Highland Road, Tiverton, RI 02878.

©2018 Town of Tiverton. All Rights Reserved.

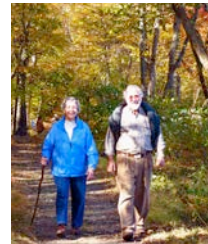
 30% post consumer waste recycled fiber

# TRAILS ETIQUETTE

It is very simple: surround yourself in nature and leave only footprints.

The following regulations apply to all open spaces in Tiverton. More detailed regulations for each preserve are posted at trailheads.

- Open sunrise to sunset.
- Carry out what you carry in.
- NOT permitted: motorized vehicles, alcohol, camping, fires, glass, trapping, metal detectors, paint ball, off-trail geocaching, or competitive field activities.
- Dogs must be on a physical leash, kept on trails, and their waste removed.



**No Dogs:** Pocasset Ridge Conservation Area and Emilie Ruecker Wildlife Refuge.

- ONLY Weetamoo Woods and Pardon Gray Preserve allow mountain biking and horseback riding.

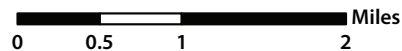
- **Safety Alert:** Ticks and poison ivy are found in all wild areas of Southeastern New England. You can minimize risk by avoiding contact with vegetation and staying on official trails.

Thank you for being a steward of our natural habitats.

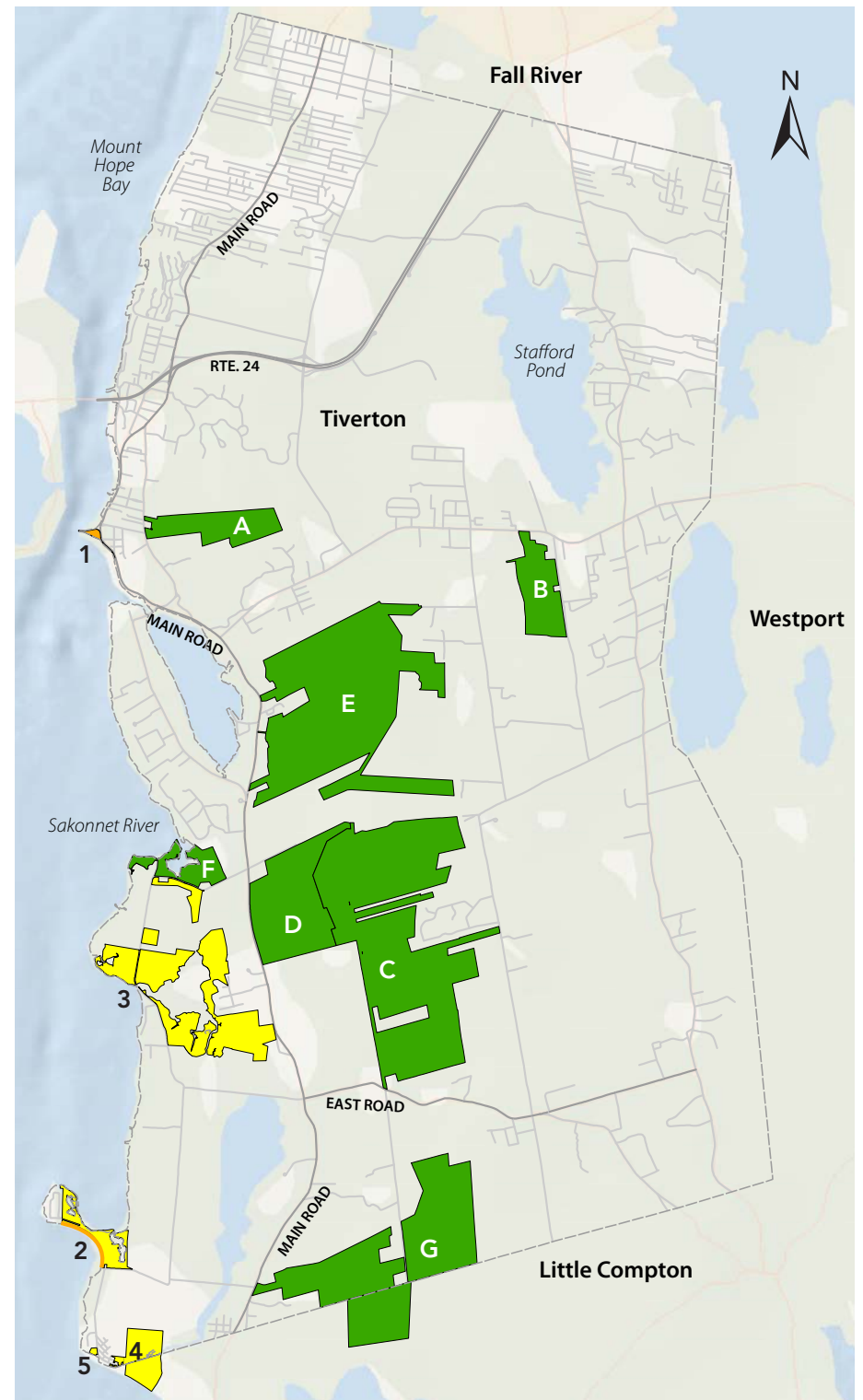
This booklet and all maps are available to download at [www.tiverton.ri.gov](http://www.tiverton.ri.gov)

**Tiverton Community Map**  
**PUBLICLY ACCESSIBLE**

- Walking Trails
- Salt Marshes
- Beaches with Seasonal Life Guards
- A Fort Barton and Highland Woods
- B Basket Swamp Preserve
- C Weetamoo Woods
- D Pardon Gray Preserve
- E Pocasset Ridge Conservation Area
- F Emilie Ruecker Wildlife Refuge
- G RIDEM Eight Rod Farm
- 1 Grinnell's Beach
- 2 Fogland Beach
- 3 RIDEM Sapowet Marsh
- 4 TNC Fogland Marsh Preserve
- 5 High Hill Point



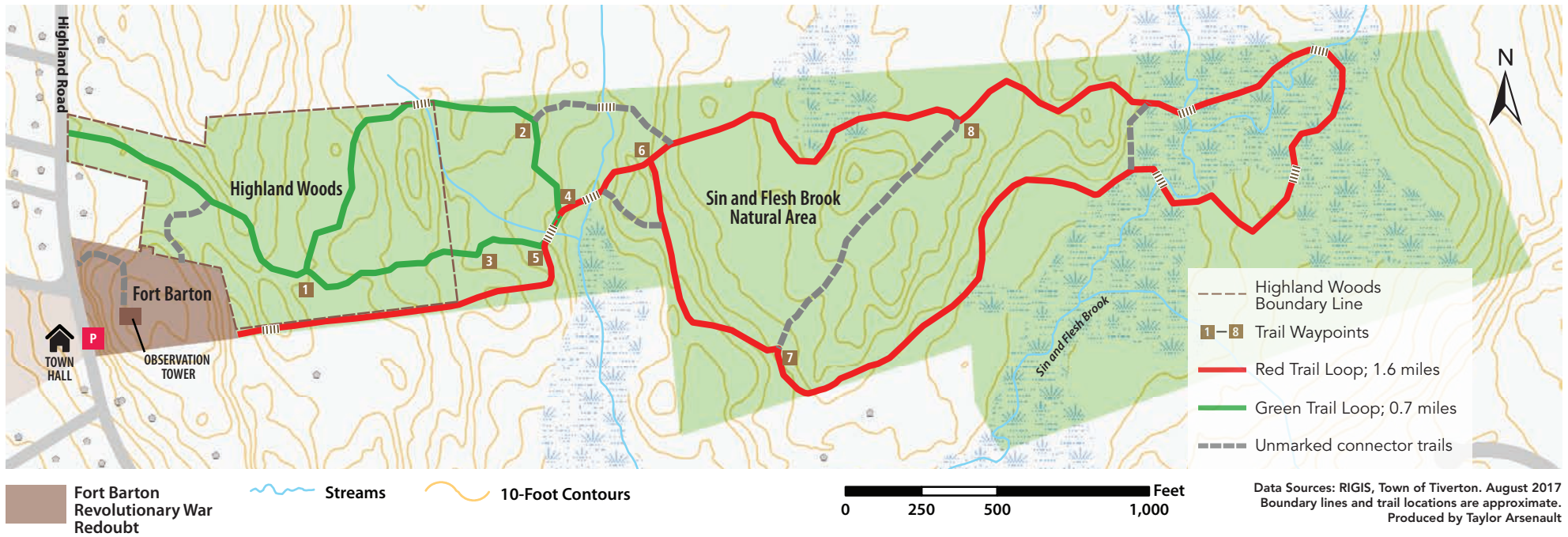
Data Sources: RIGIS, Town of Tiverton, August 2017  
 Boundary lines are approximate.  
 Produced by Taylor Arseneault



# A FORT BARTON AND HIGHLAND WOODS

NO BIKES; NO HUNTING

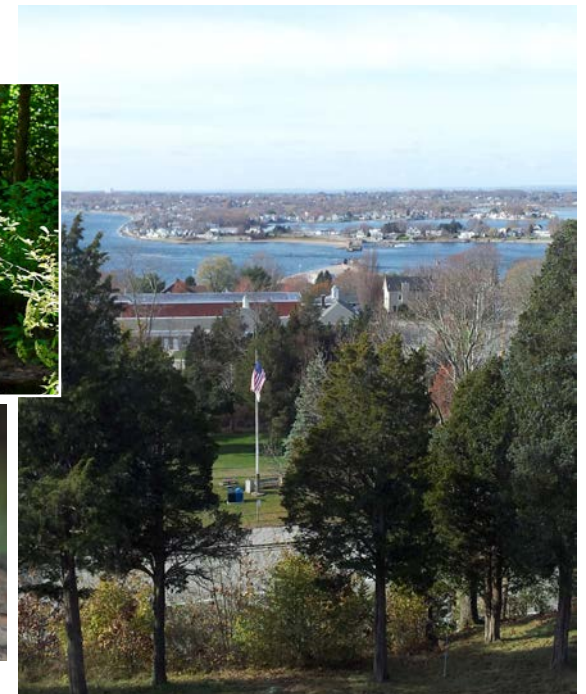
98 acres; 2.8 miles of trails



There is much to charm visitors at Fort Barton and Highland Woods, including Revolutionary War history, vernal pools, and the pristine Sin and Flesh Brook Natural Area. Parking is opposite Town Hall at 343 Highland Road, where a climb up a winding driveway leads to original Revolutionary War earthworks. Less strenuous access is 250 yards north to Highland Woods where one can park on the street and take a gentler path up. While wandering around the redoubt, it is easy to imagine colonial militias firing artillery across the narrow Sakonnet Passage to harass British positions. Climb the observation tower and enjoy a panoramic view of the Sakonnet Passage and Mount Hope Bay.

At least another hour will be required to check out the towering oaks, the lovely scent of sweet pepperbush, and the babbling ripples of Sin and Flesh Brook.

STEWARDS: Town of Tiverton and Tiverton Land Trust



## B BASKET SWAMP PRESERVE

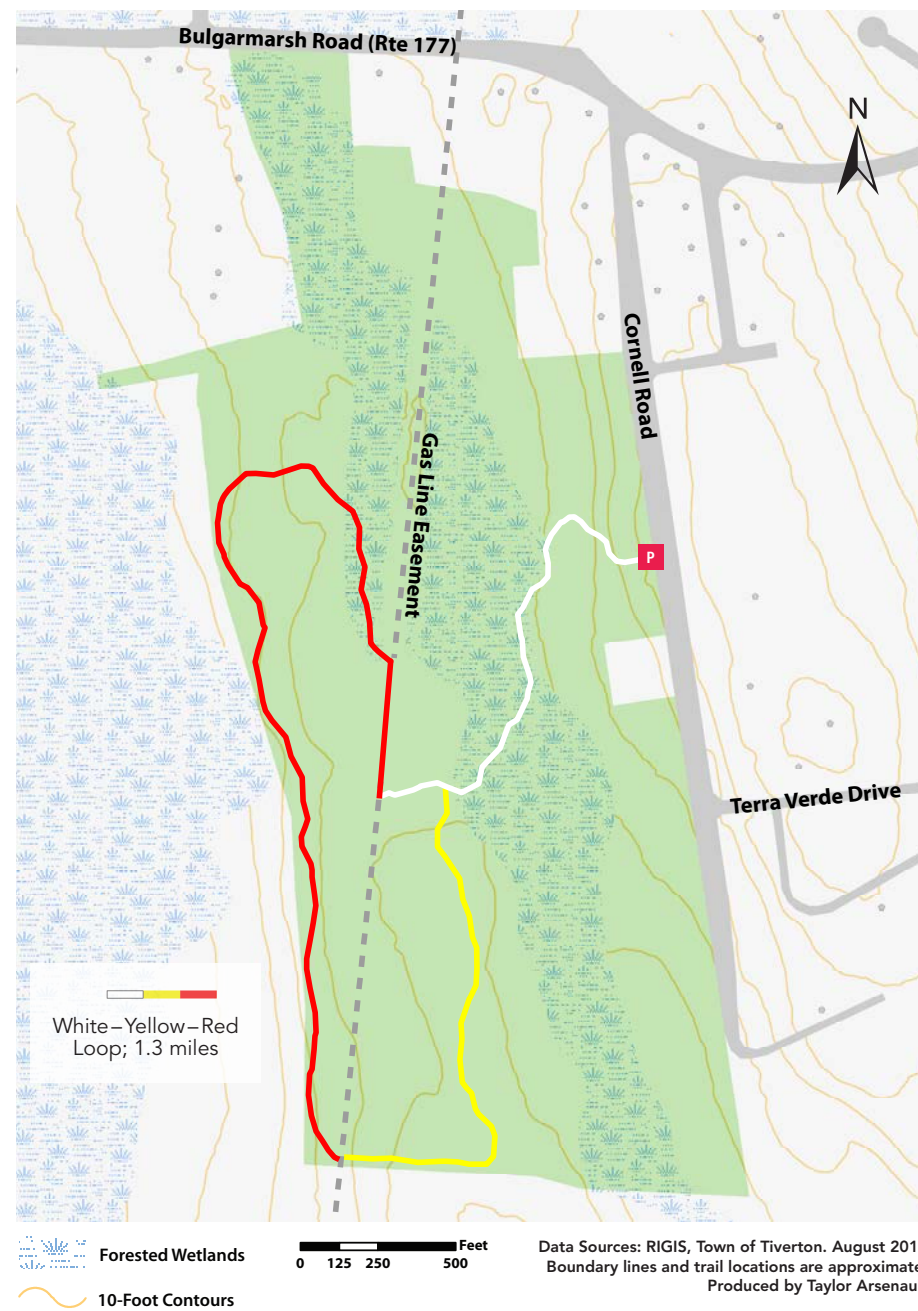
96 acres; 1.3 miles of trails

Basket Swamp was the name given on an old Tiverton map to the wetland in this preserve. That was a common name for swamps where “basket ashes” grow. That tree (*Fraxinus nigra*) is a swampland species uniquely suited for basket making. The only trailhead is on Cornell Road, a quarter mile south of Bulgarmarsh Road (Route 177). Coming off the trailhead is the White Trail that descends immediately into the wetland’s oak-holly hardwood forest. The trail quickly transitions to a dry, oak-pine woodland, just as the Yellow Trail branches off to the left (south). Walking through stone fences and flat stone-free terrain, one senses the presence of an old farm settlement. Further south the trail curves westward and crosses a cleared gas-line easement, the other side of which is the start of the Red Trail. This leads to a lovely walk through mature birch, sassafras, and woodland ferns. Eventually circling clockwise back to the east, the trail returns to the easement where, 500 feet to the south, the White Trail may be joined for returning to the trailhead.

STEWARD: Tiverton Land Trust



NO HUNTING



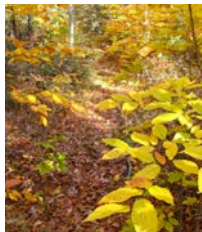
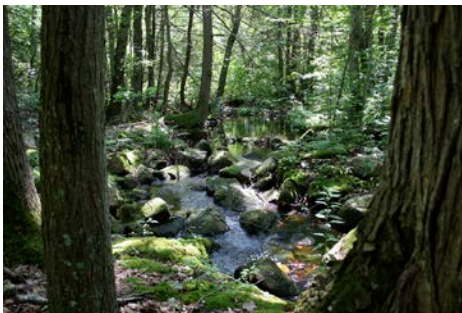
Learn more at [tivertonlandtrust.org](http://tivertonlandtrust.org)

## C WEETAMOO WOODS

655 acres; 6.5 miles of trails

Weetamoo Woods is named after the last Sachem of the Pocasset area native people. She died in King Phillips War. The best trailhead for a first-time visitor is on East Road, a quarter mile east of historic Tiverton Four Corners. The information kiosk is a short walk from the parking area. From there hikers may take various trail loops for visiting many natural and historical features, including High Rock, a 12-acre meadow, an Early American slab bridge, and the foundations and arched bridge associated with an 1800s sawmill. In between these features are hundreds of acres of coastal oak-holly forest that surround Cedar Swamp. Trails may also be accessed at the Land Trust trailhead and parking area on Main Road adjacent to a 65-acre grassland maintained for ground nesting bird species.

STEWARD: Town of Tiverton



## D PARDON GRAY PRESERVE

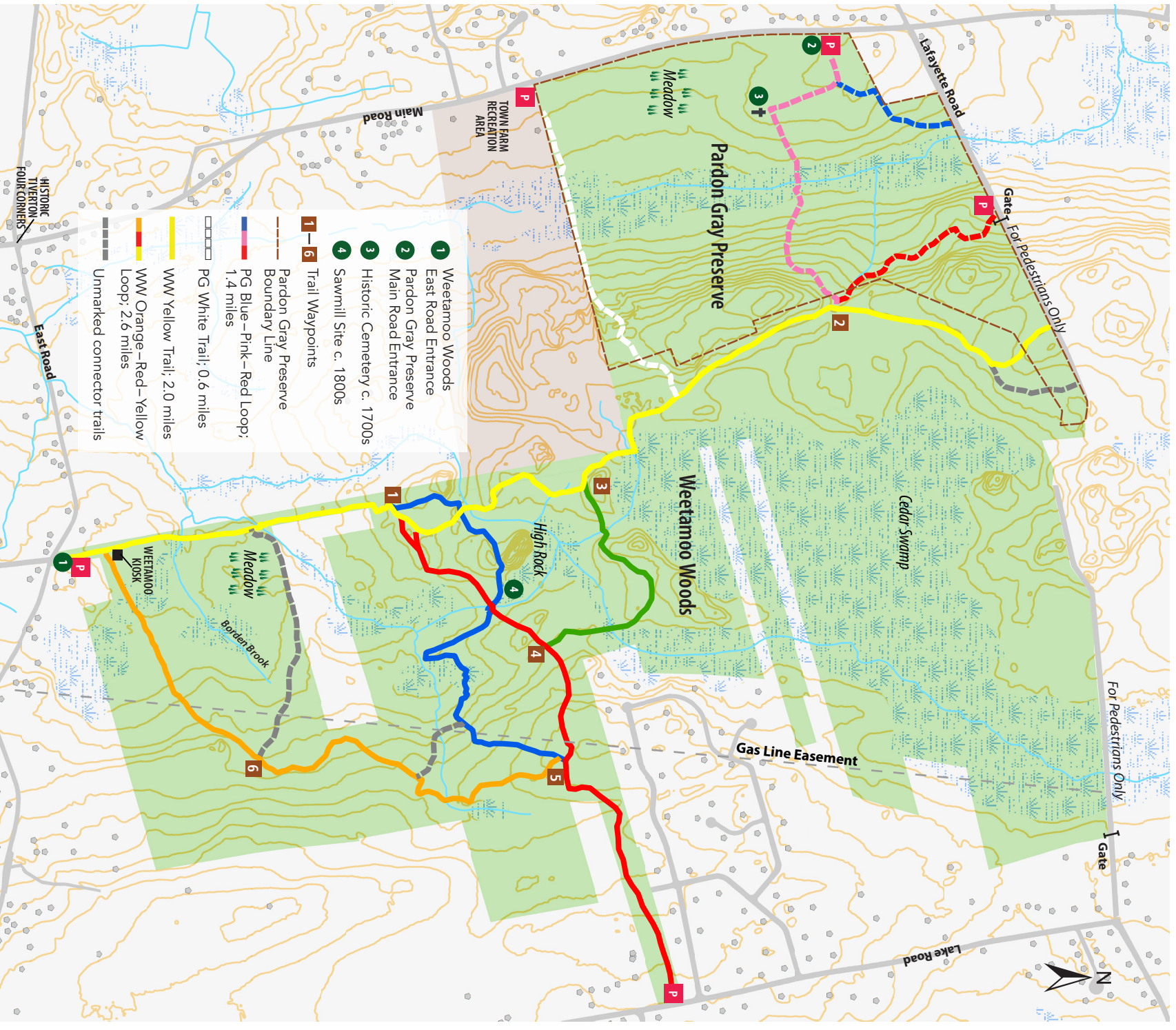
229 acres; 1.8 miles of trails

Pardon Gray Preserve nestles alongside the northwest border of Weetamoo Woods. It includes part of the forested "Pocasset Ridge" and overlooks 65 acres of open grassland-meadow, an increasingly rare habitat for grassland nesting birds. From the Main Road parking area, the restored Gray family cemetery is visible in the field, with its fieldstone wall enclosure and markers dating back to the 18th century. This trail continues into the woods below, past a lovely vernal pool, thence up the ridge for a 1 ½-mile counter-clockwise loop around the Ridge Trail back to the to the parking lot by way of the Lafayette Connector trail off Lafayette Road.

STEWARD: Tiverton Land Trust



Learn more at [tivertonlandtrust.org](http://tivertonlandtrust.org)



# E POCASSET RIDGE CONSERVATION AREA

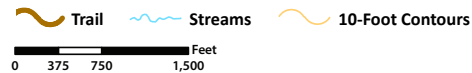
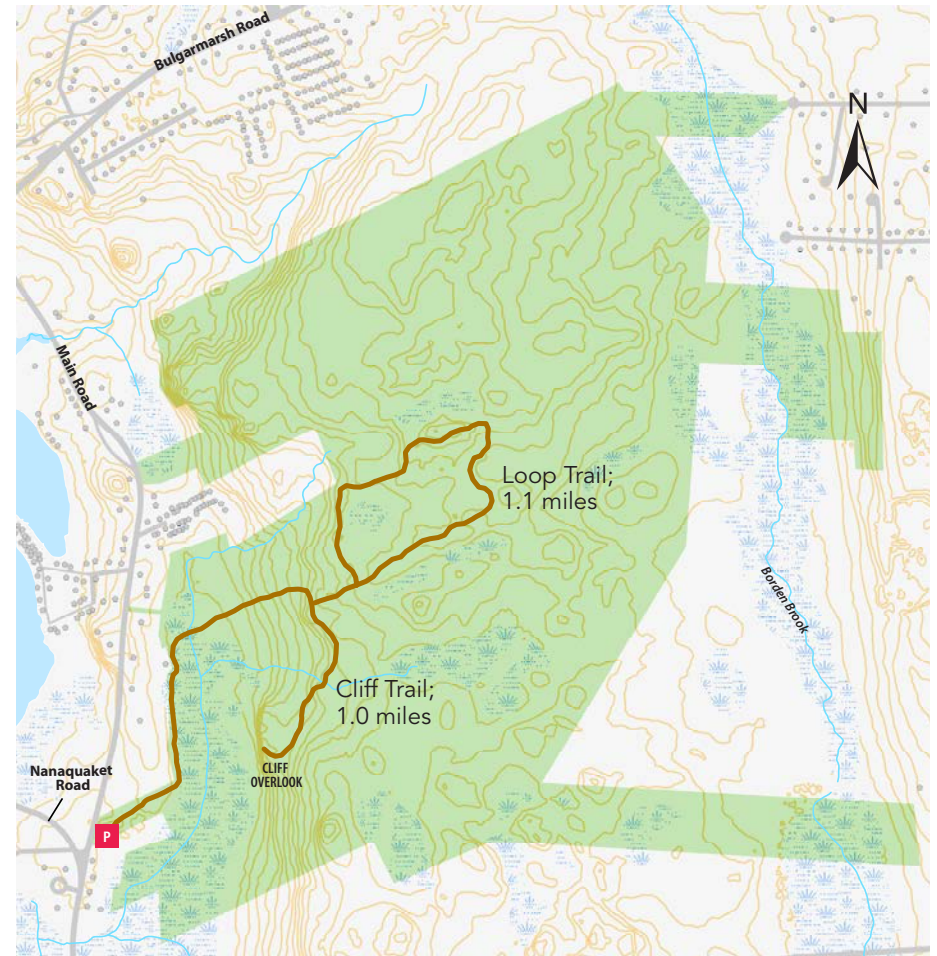
617 acres; 2.1 miles of trails

Adjacent to Weetamoo Woods and Pardon Gray Preserve, Pocasset Ridge is a vital part of the Tiverton “Pocassetlands” – over 1,500 acres of closed canopy forest. The stewards manage Pocasset Ridge as a wild area to achieve minimal ecosystem disturbance. Reserved exclusively for hikers, without dogs or mountain bikes, this is a place to get lost in the silence of the forest, or in a symphony of deep woods birdsong on a spring morning. The only trailhead is at 2910 Main Road, adjacent to the south intersection of Nanaquaket with Main Road. From there the trail rises to a rocky highland forest of oak, huckleberry, glacier-strewn boulders and granite outcrop. The Cliff Trail passes through a drainage basin with magnificent beeches and red oaks, and terminates at a 90-foot sheer cliff overlooking a red maple – yellow birch swamp. The Loop Trail connects two old wagon roads, which for generations gave passage to oxcarts loaded with fuel wood.

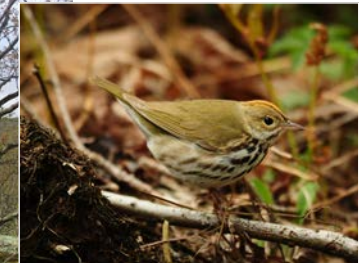
**STEWARDS:** The Nature Conservancy, Tiverton Land Trust, RIDEM, Town of Tiverton



**NO DOGS; NO BIKES; RIDEM BOW HUNTING**



Data Sources: RIGIS, Town of Tiverton. August 2017  
Boundary lines and trail locations are approximate.  
Produced by Taylor Arsenaault





# F EMILIE RUECKER WILDLIFE REFUGE

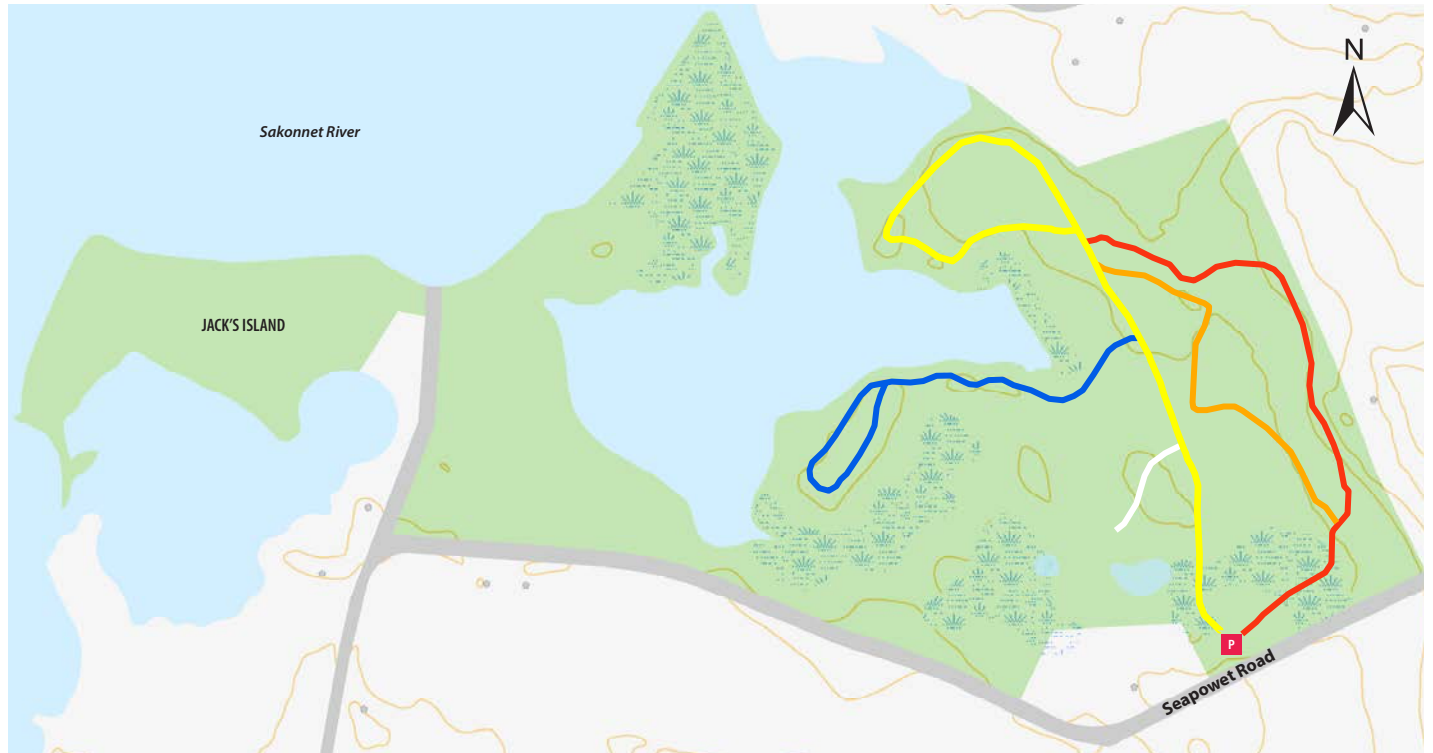
52 acres; 1.3 miles of trails

NO DOGS; NO BIKES; NO HUNTING

Emilie Ruecker Wildlife Refuge offers a great place to sample three of Tiverton's signature coastal ecotypes – woodlands, fresh water wetlands, and coastal salt marshes. The Orange and Red Trails on the east side favor the upland habitats, while the Blue and Yellow Trails provide a tour of the shoreline and estuarine systems. Emilie Ruecker is also a superb location for marsh birds, with shallow tidal areas to attract waders, and good shoreline cover for excellent observation points. Trailhead parking is on Seapowet Avenue, a quarter mile west off Main Road.

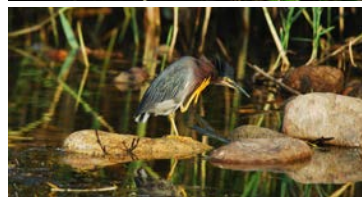
**NOTE:** Emilie Ruecker Wildlife Refuge is for hikers only – no dogs or mountain bikes.

**STEWARD:** Audubon Society of Rhode Island



0 125 250 500 Feet

Data Sources: RIGIS, Town of Tiverton. August 2017  
Boundary lines and trail locations are approximate.  
Produced by Taylor Arsenault



Learn more at [asri.org](http://asri.org)

## **G** EIGHT ROD FARM

418 acres, 1.5 miles of unmarked trails

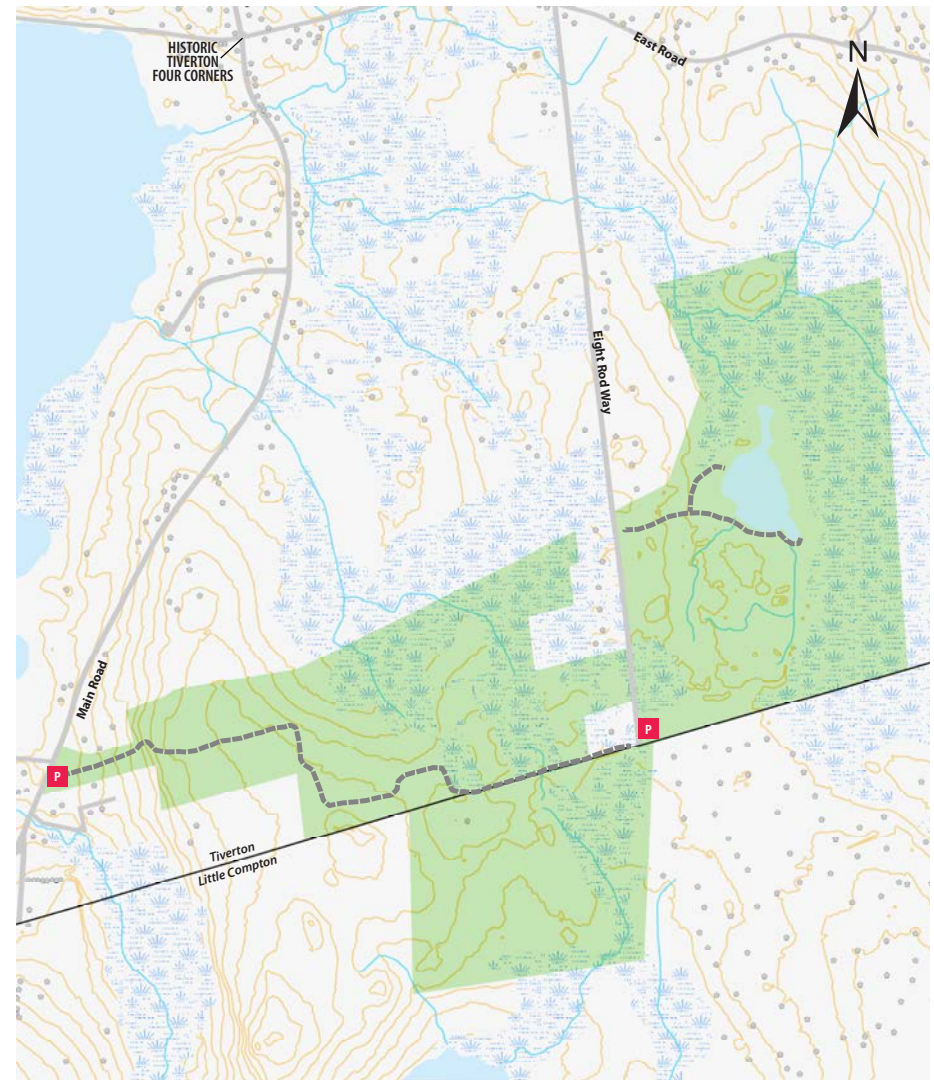
Eight Rod Farm is a state wildlife management area located on the border with Little Compton. Farmed in the summer months, this property offers seasonal fishing and hunting. The trailhead on Main Road is opposite the intersection with Pond Bridge Road. From there the trail rises slowly, passes through a hedgerow, then meanders a mile plus through various open fields, with several dead-end spur trails off the main trail. The final quarter mile is a laneway on the town boundary with Little Compton. The trail ends at the southern end of the paved Eight Rod Way. Another short trail leading to a pond may be accessed a quarter mile up Eight Rod Way.

**NOTE:** Fluorescent orange must be worn during hunting season.

**STEWARD:** RIDEM Division of Fish and Wildlife



**RIDEM HUNTING PERMITTED**



Streams      10-Foot Contours  
0 250 500 1,000 Feet      Unmarked Trail

Data Sources: RIGIS, Town of Tiverton. August 2017  
Boundary lines and trail locations are approximate.  
Produced by Taylor Arsenaunt

Learn more at [dem.ri.gov](http://dem.ri.gov)

## SALT MARSHES AND BEACHES



The Sakonnet River is a broad, saltwater strait connecting Rhode Island Sound to the south with Mount Hope Bay to the north. Tiverton's shoreline offers expansive salt marshes and several public beaches, both cobble and sandy.

### 1 Grinnell's Beach

Small family beach with lifeguards and restrooms. Parking fee for out-of-state visitors. No dogs April 1st through Columbus Day.

Steward: Town of Tiverton



### 2 Fogland Beach and Conservation Area

Seasonal lifeguards, restroom facilities, playground and picnic tables. Parking fee for out-of-town visitors. Located on the north shore, the conservation area is limited to gentle uses. No dogs April 1st through Columbus Day.

Steward: Town of Tiverton



### 3 Sapowet Marsh

This 260-acre refuge includes a variety of coastal habitats. Parking allowed on north side of bridge, with walking access to the cobble beach for fishing, bird watching, kayaking, or simply enjoying the view. Seasonal hunting permitted.

**Note:** Fluorescent orange must be worn during hunting season.

Steward: RIDEM Division of Fish and Wildlife



### 4 Fogland Marsh Preserve

Filled with plant, bird and aquatic life, this fragile salt marsh connects to a pristine, ¼-mile beach reaching into neighboring Little Compton. No parking.

Steward: The Nature Conservancy of Rhode Island



### 5 High Hill Point

Small, neighborhood, cobble beach. No lifeguards, no parking. Pedestrian and bicycle access only. No dogs April 1st through Columbus Day.

Steward: Town of Tiverton



## IN APPRECIATION:

Our deepest appreciation to Tiverton's many volunteers and the coordinated efforts of the following dedicated land preservation groups for their continued interest in Tiverton's natural areas.

**Tiverton Land Trust**, a private, non-profit corporation, focuses on preserving Tiverton's rural character and natural resources. TLT derives funding through private donations, membership and land grants when acquiring parcels for preservation. The land trust is accredited by the National Land Trust Accreditation Commission.

**401-625-1300**    [tivertonlandtrust.org](http://tivertonlandtrust.org)

**Tiverton Open Space and Land Preservation Commission**, a Town Council appointed volunteer commission, is tasked to preserve and steward natural habitats and farmland in Tiverton. Land acquisitions are funded primarily by a share of the town's real estate conveyance tax income to match federal, state and private grant opportunities.

**Town Hall: 401-625-6700**    [tiverton.ri.gov](http://tiverton.ri.gov)

**The Nature Conservancy** is a worldwide conservation organization with specific interests in the Sakonnet region for the protection of ecologically important lands and waters for nature and people.

**Rhode Island office: 401-331-7110**    [nature.org/rhodeisland](http://nature.org/rhodeisland)

**Audubon Society of Rhode Island**, an independent statewide conservation organization, fosters the conservation of wild birds and other forms of wildlife through land protection, environmental education and advocacy.

**401-949-5454**    [asri.org](http://asri.org)

**Rhode Island Department of Environmental Management**

**401-222-4700**    [dem.ri.gov](http://dem.ri.gov)

*The Town of Tiverton thanks the following individuals for their unique contributions: Taylor Arsenault, GIS/GPS mapping; Mary Sexton, Good Graphic Design; Ginger Lacy, Project Coordinator; and Garry Plunkett for his GPS tracking and extensive knowledge of the natural habitats of Rhode Island.*



Photography by: Geoff Dennis, Garry Plunkett, Wayne Browning, Ginger Lacy, John Berg, Leslie Lindeman, and Phil Schuyler.



You can help care for these natural areas  
with a donation to the  
**Pocassetlands Stewardship Fund**  
at the Rhode Island Foundation.

To donate, contact RIF:  
**401.274.4564 • [rifoundation.org](http://rifoundation.org)**